

# DEEP\_EVO EXTR 9W/12W/15W

(Module 7W 835 lumen 3000K)

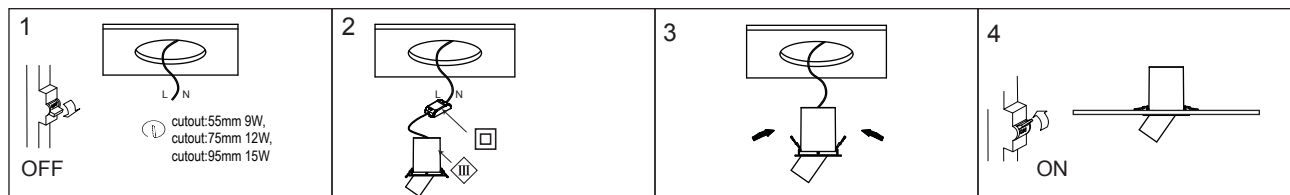
(Module 10.8W 1151 lumen 3000K)

(Module 12.8W 1286 lumen 3000K)

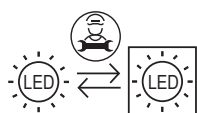
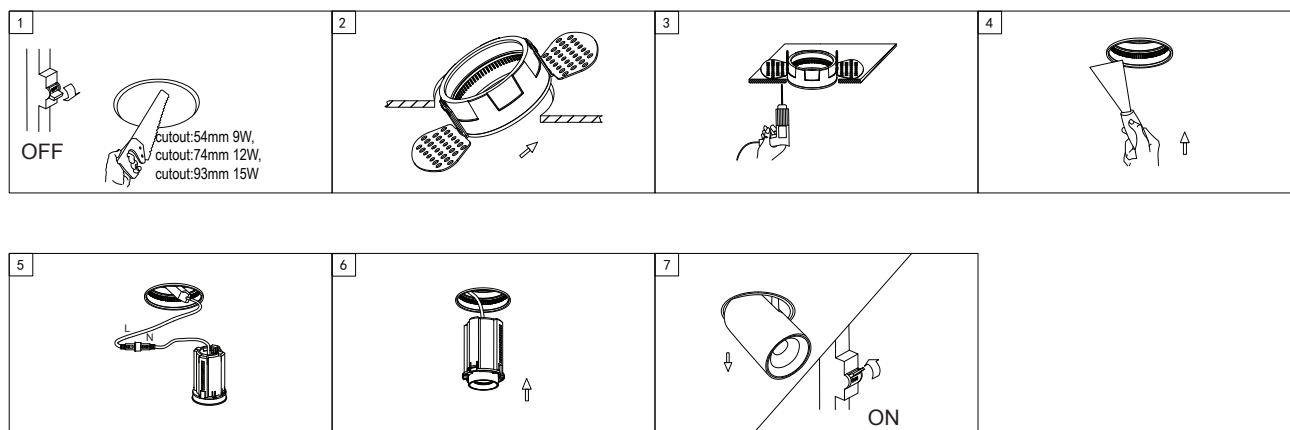
200-240VAC

# LOGICA

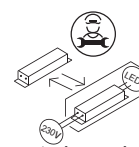
## TRIM



## TRIMLESS



Replaceable (LED only) light source by a professional  
Sorgente luminosa sostituibile solo da tecnico abilitato



Replaceable control gear by a professional  
Driver sostituibile solo da tecnico abilitato

Togliere tensione prima dell'installazione o qualsiasi manutenzione .


L'installazione e la manutenzione devono essere affidate a personale qualificato e devono essere eseguite conformemente alle prescrizioni delle vigenti normative impianti .


Questo prodotto contiene una fonte luminosa di Classe Energetica F (9W), G (12/15W)

Disconnect the power supply before installation or any maintenance work .

Installation and maintenance must be carried by qualified personnel and according to the current Directives on electrical systems .

This product contains light source of Energy Efficiency Class F (9W), G (12/15W)

Il simbolo  riportato sull'apparecchio indica che il prodotto deve essere smaltito in modo differenziato dai rifiuti urbani.

This symbol  shown on the device indicates that the product must be disposed of in a way which differs from the standard urban rubbish.



LOGICA è un marchio



**MARINO CRISTAL**®

MARINO CRISTAL SPA

Via Guardia del Consiglio, 31

47899 Serravalle Repubblica di San Marino

